

To make a referral please contact:

Amanda Rogers, BS
Family Advocate and Parenting
Support Services Lead
269.370.6811
Amanda.Rogers@fcsource.org

Funded by the State of Michigan



Family & Children Services is a private, nonprofit, nonsectarian, human service organization begun in 1903. Its mission has remained constant "...To support, strengthen and preserve the safety, well being and dignity of children, individuals and families".

The Agency receives funding through contracts with Community Mental Health programs and the Michigan Department of Health and Human Services, insurance reimbursements, fees for service and contributions. We are accredited by the Council on Accreditation of Services for Families and Children. The Agency is licensed by the State of Michigan as a Child Placing Agency, Child Caring Institution (Children's Therapeutic Group Home), and Substance Abuse Program.

Sherry Thomas-Cloud, MSW, LMSW
Chief Executive Officer
Sherry.Thomas-Cloud@fcsource.org

Parent Aide Program

Joyce Daily-Spence, MA, LLP
Director of Child Welfare Services
Kalamazoo (269) 344.0202 - Calhoun (269) 965.3247
joyced@fcsource.org

Allison Bland, MA
Program Manager
(269) 344.0200 x.223
allisonb@fcsource.org

Family & Children Services' facilities are barrier-free.



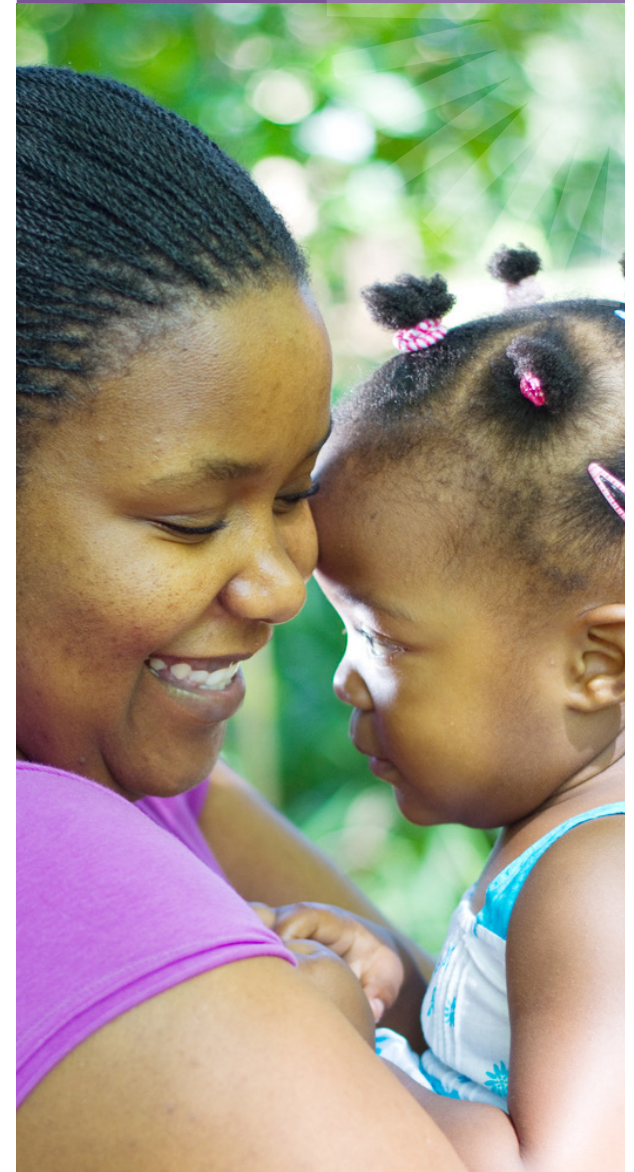
1608 Lake Street, Kalamazoo, MI 49001
269.344.0202 | Fax 269.344.0285

778 W. Columbia Avenue, Battle Creek, MI 49015
269.965.3247 | Fax 269.966.4135

fcsource.org



Parent Aide



Parent Aide

Parent Aide serves families in Branch or Calhoun County that have been identified by the Michigan Department of Health and Human Services (MDHHS) Children's Protective Services as needing support. The families are offered a Parent Aide who meets with them in their home within five days of referral. A range of services are provided to the families for up to six months.

What can families expect?

Families can expect a strength-based approach. The Parent Aide will use the family's strengths to assist them in solving the challenges they are facing. Service areas include:

- Parenting Skills Education
- Life/Home Management Skills
- Connection with community resources
- Communication and conflict resolution
- Building positive relationships
- Assistance with counseling referrals
- Family, individual, and/or marital support
- Support for transportation needs
- Joint development of goals with parents
- Child care
- Monitoring school attendance
- Arranging tutoring, if necessary
- Identifying housing
- Meal planning



The Parent Aide Program:

- Works with families in their own home
- Learns about the challenges each family is facing and links families with direct services
- Provides service to the family for up to six (6) months
- Works with families during evenings or weekends when necessary
- Works with families for a minimum of one (1) hour per week
- Provides a monthly summary of services to the MDHHS worker
- Administers the Adult-Adolescent Parenting Inventory to determine parenting beliefs and attitudes toward child rearing

Who is eligible?

Parent or primary caregiver in Branch or Calhoun County who is responsible for the care and supervision of minor child(ren):

- Who has an open MDHHS Category I, II, III Delinquency case
- May be used as an alternative to out-of-home placement
- May be used to assist with an early return goal for youth in foster care

Who can refer?

Branch and/or Calhoun County Department of Health and Human Services Children's Protective Services' specialists and supervisors

To make a referral please contact:

Amanda Rogers, BS
*Family Advocate and Parenting
Support Services Lead*
269.370.6811
Amanda.Rogers@fcsource.org

